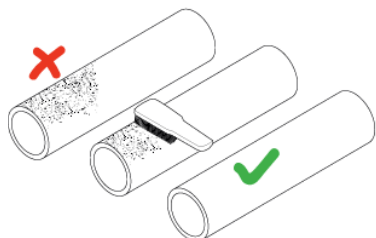
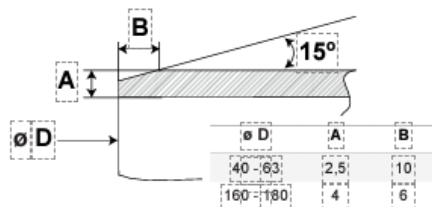


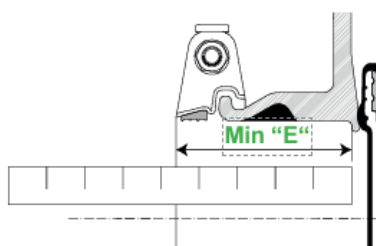
Montagevejledning Block Plus



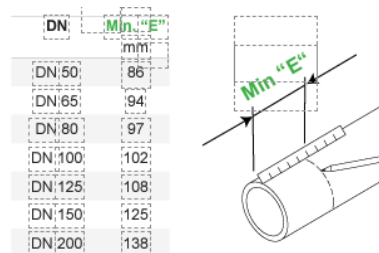
1. Rens røret



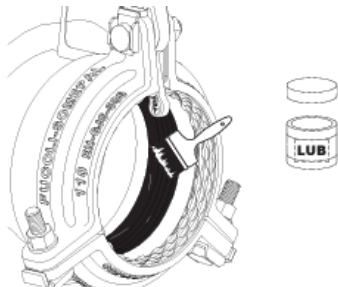
2. Affas rørenderne



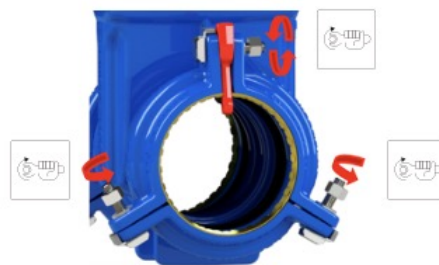
3. Find produktets indstiks dybde (E)



4. Find produktets indstiks dybde (3)



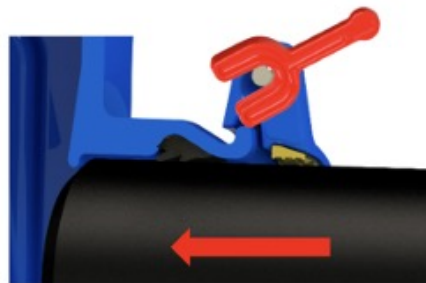
5. Smør pakningen med egnet glidemiddel



6. Løsn alle bolte



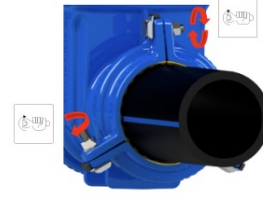
7. Skub den røde afstands split opad



8. Skub røret ind indtil du når den markerede indstiks dybde



9. Fjern den røde afstands split helt



10. Spænd boltene i henhold til skema

| | Bult |  | Ådragningsmoment |
|-----------|------|---|------------------|
| 50 / 63 | M10 | 17 mm | 30 - 40 Nm |
| 65 / 75 | | | |
| 80 / 90 | | | |
| 100 / 110 | | | |
| 125 / 125 | | | |
| 150 / 160 | M12 | 19 mm | 50 - 70 Nm |
| 200 / 200 | | | |

Demontering



12. Løsn boltene



13. Træk røret ud